

## Codo 135° macho cilíndrico orientable - RPQ MG



### Rosca macho BSPP

G 1/8

### Para tubo Ø ext. (mm)

4

### Presión de uso

0 a 10 bar

### Temperatura

0°C a + 60°C

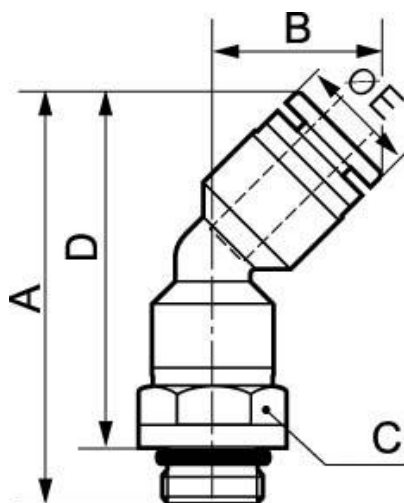
### Material

Polímero y latón níquelado

## Descripción

Referencia	Rosca macho BSPP	Para tubo Ø ext. (mm)
RPQ MG0400	G 1/8	4
RPQ MG0401	G 1/4	4
RPQ MG0500	G 1/8	5
RPQ MG0501	G 1/4	5
RPQ MG0502	G 3/8	5
RPQ MG0503	G 1/2	5
RPQ MG0600	G 1/8	6
RPQ MG0601	G 1/4	6

Referencia	Rosca macho BSPP	Para tubo Ø ext. (mm)
RPQ MG0602	G 3/8	6
RPQ MG0603	G 1/2	6
RPQ MG0800	G 1/8	8
RPQ MG0801	G 1/4	8
RPQ MG0802	G 3/8	8
RPQ MG0803	G 1/2	8
RPQ MG1000	G 1/8	10
RPQ MG1001	G 1/4	10
RPQ MG1002	G 3/8	10
RPQ MG1003	G 1/2	10
RPQ MG1201	G 1/4	12
RPQ MG1202	G 3/8	12
RPQ MG1203	G 1/2	12



### Dimensions

Referencia	A mm	B mm	C mm	D mm	E mm
RPQ MG0400	38	14.5	12	33.5	10
RPQ MG0401	39	14.5	14	33	10
RPQ MG0500	41.5	16.5	12	35.5	12.8
RPQ MG0501	42.5	16.5	14	36.5	12.8
RPQ MG0502	44	16.5	17	37.5	12.8
RPQ MG0503	44	16.5	21	36	12.8
RPQ MG0600	42	16.5	12	35.5	12.8
RPQ MG0601	43	16.5	14	37	12.8
RPQ MG0602	44	16.5	17	37.5	12.8
RPQ MG0603	45	16.5	21	37	12.8
RPQ MG0800	46	19	14	40.5	13.8
RPQ MG0801	46	19	14	40	13.8
RPQ MG0802	47	19	17	40	13.8
RPQ MG0803	48.5	19	21	40.5	13.8

Referencia	A mm	B mm	C mm	D mm	E mm
<b>RPQ MG1000</b>	51	22	17	45	16.8
<b>RPQ MG1001</b>	51	22	17	45	16.8
<b>RPQ MG1002</b>	51	22	17	44.5	16.8
<b>RPQ MG1003</b>	52	22	21	44	16.8
<b>RPQ MG1201</b>	55	23	19	49	19.8
<b>RPQ MG1202</b>	55	23	19	48.5	19.8
<b>RPQ MG1203</b>	56	23	21	48	19.8