

## Codo 90° macho cilíndrico orientable - RPC MG



### Rosca macho BSPP

G 1/8

### Para tubo Ø ext. (mm)

4

### Presión de uso

0 a 10 bar

### Temperatura

0°C a + 60°C

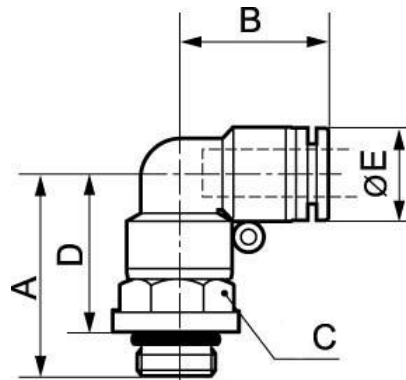
### Material

Polímero y latón níquelado

## Descripción

Referencia	Rosca macho BSPP	Para tubo Ø ext. (mm)
RPC MG0400	G 1/8	4
RPC MG0401	G 1/4	4
RPC MG0500	G 1/8	5
RPC MG0501	G 1/4	5
RPC MG0502	G 3/8	5
RPC MG0503	G 1/2	5
RPC MG0600	G 1/8	6
RPC MG0601	G 1/4	6
RPC MG0602	G 3/8	6

Referencia	Rosca macho BSPP	Para tubo Ø ext. (mm)
RPC MG0603	G 1/2	6
RPC MG0800	G 1/8	8
RPC MG0801	G 1/4	8
RPC MG0802	G 3/8	8
RPC MG0803	G 1/2	8
RPC MG1000	G 1/8	10
RPC MG1001	G 1/4	10
RPC MG1002	G 3/8	10
RPC MG1003	G 1/2	10
RPC MG1201	G 1/4	12
RPC MG1202	G 3/8	12
RPC MG1203	G 1/2	12
RPC MG1402	G 3/8	14
RPC MG1403	G 1/2	14
RPC MG1602	G 3/8	16
RPC MG1603	G 1/2	16



### Dimensions

Referencia	A mm	B mm	C mm	D mm	E mm
<b>RPC MG0400</b>	24.1	17.5	12	18.6	10
<b>RPC MG0401</b>	24.7	17.5	14	18.7	10
<b>RPC MG0500</b>	27	20.5	12	21.5	12.8
<b>RPC MG0501</b>	27.5	20.5	14	21.5	12.8
<b>RPC MG0502</b>	29	20.5	17	22.5	12.8
<b>RPC MG0503</b>	30	20.5	21	22	12.8
<b>RPC MG0600</b>	27	20.5	12	21.5	12.8
<b>RPC MG0601</b>	27.5	20.5	14	21.5	12.8
<b>RPC MG0602</b>	29	20.5	17	22.5	12.8
<b>RPC MG0603</b>	30	20.5	21	22	12.8
<b>RPC MG0800</b>	29.2	22.5	14	23.7	13.8
<b>RPC MG0801</b>	29.2	22.5	14	23.2	13.8
<b>RPC MG0802</b>	30.7	22.5	17	24.2	13.8
<b>RPC MG0803</b>	31.7	22.5	21	23.7	13.8
<b>RPC MG1000</b>	33.7	26.3	17	28.2	16.8

Referencia	A mm	B mm	C mm	D mm	E mm
<b>RPC MG1001</b>	34.2	26.3	17	28.2	16.8
<b>RPC MG1002</b>	34.2	26.3	17	27.7	16.8
<b>RPC MG1003</b>	35.2	26.3	21	27.2	16.8
<b>RPC MG1201</b>	35	27.8	19	29	19.8
<b>RPC MG1202</b>	34.5	27.8	19	28	19.8
<b>RPC MG1203</b>	36	27.8	21	28	19.8
<b>RPC MG1402</b>	38.2	29.8	22	31.7	22.7
<b>RPC MG1403</b>	37.2	29.8	24	29.2	22.7
<b>RPC MG1602</b>	41.5	30.8	24	34.9	23.8
<b>RPC MG1603</b>	39	30.8	24	31	23.8