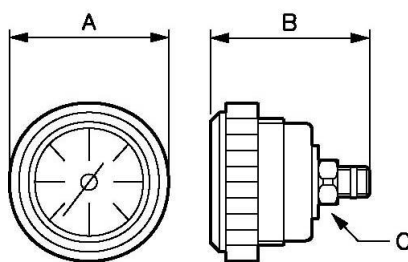


## Manómetro integrable con collarín Ø 50 mm



### Descripción

| Referencia        | Graduación (bar) | Fijación rosca macho<br>BSP | Material                                    |
|-------------------|------------------|-----------------------------|---|
| <b>MT IA0650V</b> | 0 - 6            | G 1/8                       | Limbo de vidrio compatible<br>con solventes |
| <b>MT IA1050V</b> | 0 - 10           | G 1/8                       | Limbo de vidrio compatible<br>con solventes |



### Dimensions

| Referencia        | A mm | B mm | C mm |
|-------------------|------|------|------|
| <b>MT IA0650V</b> | 60   | 49   | 14   |
| <b>MT IA1050V</b> | 60   | 49   | 14   |