

Enchufe recto macho cónico - RPD MR



Cantidad

5

Rosca macho BSPT

R 1/8

Para tubo Ø ext. (mm)

6

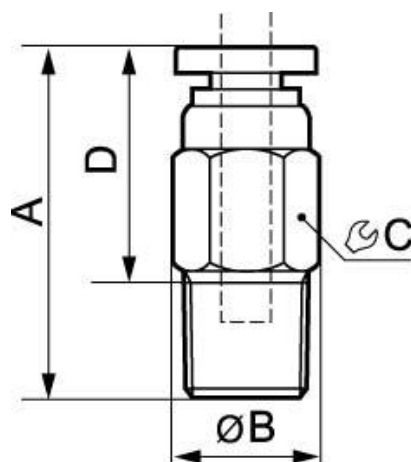
Presión de uso

0 a 10 bar

Material

Polímero y latón niquelado

Descripción			
Referencia	Cantidad	Rosca macho BSPT	Para tubo Ø ext. (mm)
RPD MR0600P	5	R 1/8	6
RPD MR0601P	5	R 1/4	6
RPD MR0800P	5	R 1/8	8
RPD MR0801P	5	R 1/4	8
RPD MR0802P	5	R 3/8	8
RPD MR1001P	5	R 1/4	10
RPD MR1002P	5	R 3/8	10



Dimensions

Referencia

RPD MR0600P

RPD MR0601P

RPD MR0800P

RPD MR0801P

RPD MR0802P

RPD MR1001P

RPD MR1002P