

Enchufe express cilíndrico rosca macho



Rosca macho BSPP

G 1/4

Presión máx de uso

10 bar

Temperatura

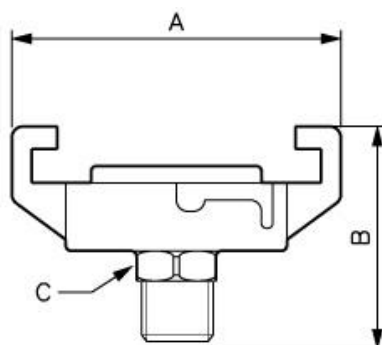
-5°C a +60°C

Material

Cuerpo latón

Descripción

Referencia	Rosca macho BSPP
EXP M813	G 1/4
EXP M1217	G 3/8
EXP M1521	G 1/2
EXP M2027	G 3/4
EXP M2634	G 1
EXP M3342	G 1 1/4



Dimensions

Referencia	A mm	B mm	C mm
EXP M813	57	40	14
EXP M1217	57	40	19
EXP M1521	57	41	24
EXP M2027	57	41	31
EXP M2634	57	44	34
EXP M3342	57	46	44